

Credit Rating

Covered Bonds



Realkredit Danmark A/S

SDRO - Cap Center S -
Residential & Commercial Mortgage Covered Bonds
Performance Report - 2024Q1

Summary

The AAA rating with a Stable Outlook assigned to the covered bonds (SDRO - Cap Center S) issued by Realkredit Danmark A/S are based on the bank's issuer rating (A+ / Stable), enhanced by four notches of governance-support based uplift.

Governance support factors, in total, provide an rating uplift of up to six notches and, effectively, a floor against a deterioration in cover pool credit quality. This reflects our assessment of the strong governance support provided by the legal covered bond and resolution framework in Denmark.

We have classified the interplay between complexity and transparency with a cover pool complexity (CPC) category of 'Low', allowing for a three-notch uplift on top of governance support factors, which translates into a maximum cover pool uplift of nine notches. Considering the regularly provided level of overcollateralisation, the cover pool could provide a five-notch buffer against an issuer rating downgrade.

The last credit rating action and its supporting rating rationale can be found on scoperatings.com.

Covered Bonds

AAA

Outlook

Stable

Issuer

A+

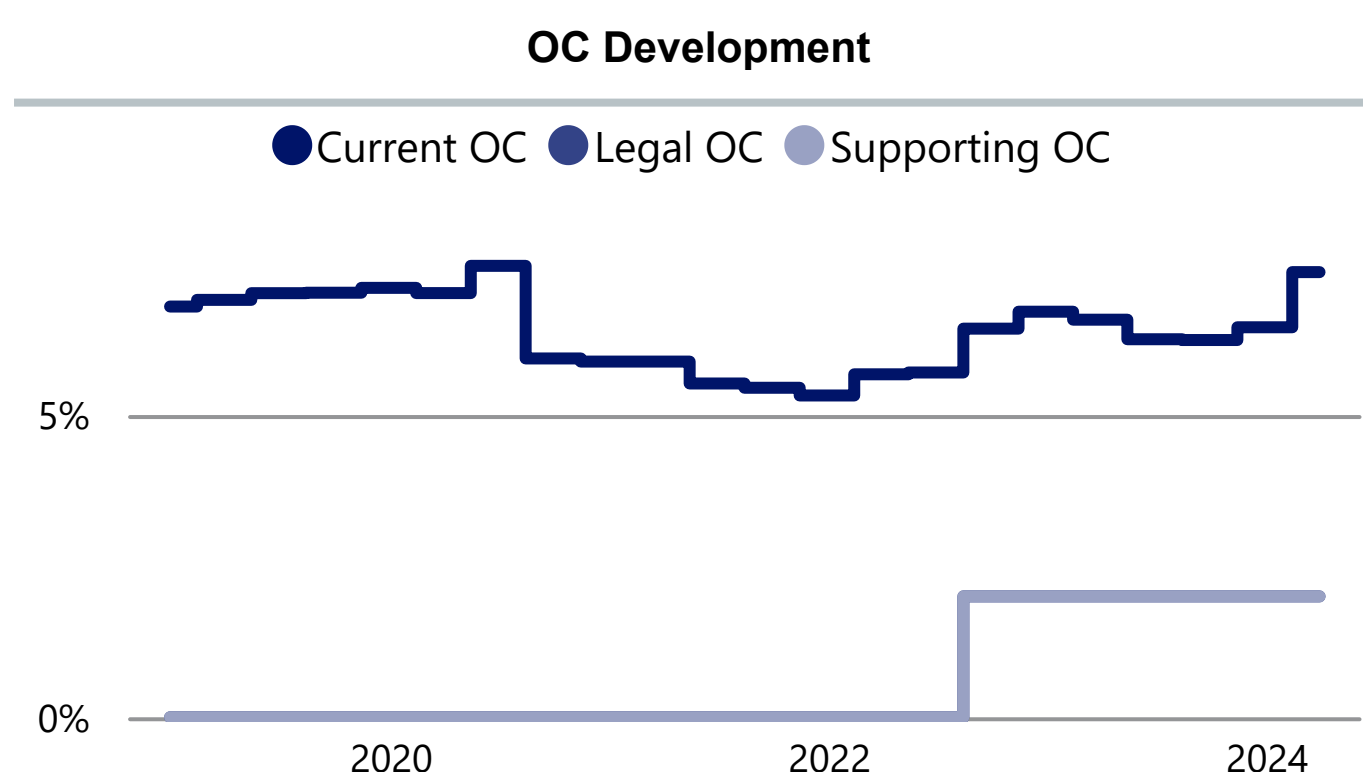
Outlook

Stable

Covered Bonds building blocks

GOVERNANCE SUPPORT	COVER POOL SUPPORT	MAXIMUM RATING DISTANCE	RATING UPLIFT
	Cover pool support +3	D9	(unused)
	Cover pool support +2	D8	(unused)
	Cover pool support +1	D7	(unused)
Resolution regime +4	Governance support = Covered bond rating floor	D6	(unused)
Resolution regime +3		D5	(unused)
Resolution regime +2		D4	AAA
Resolution regime +1		D3	AA+
Legal framework +2		D2	AA
Legal framework +1		D1	AA-
Issuer Rating		D0	A+

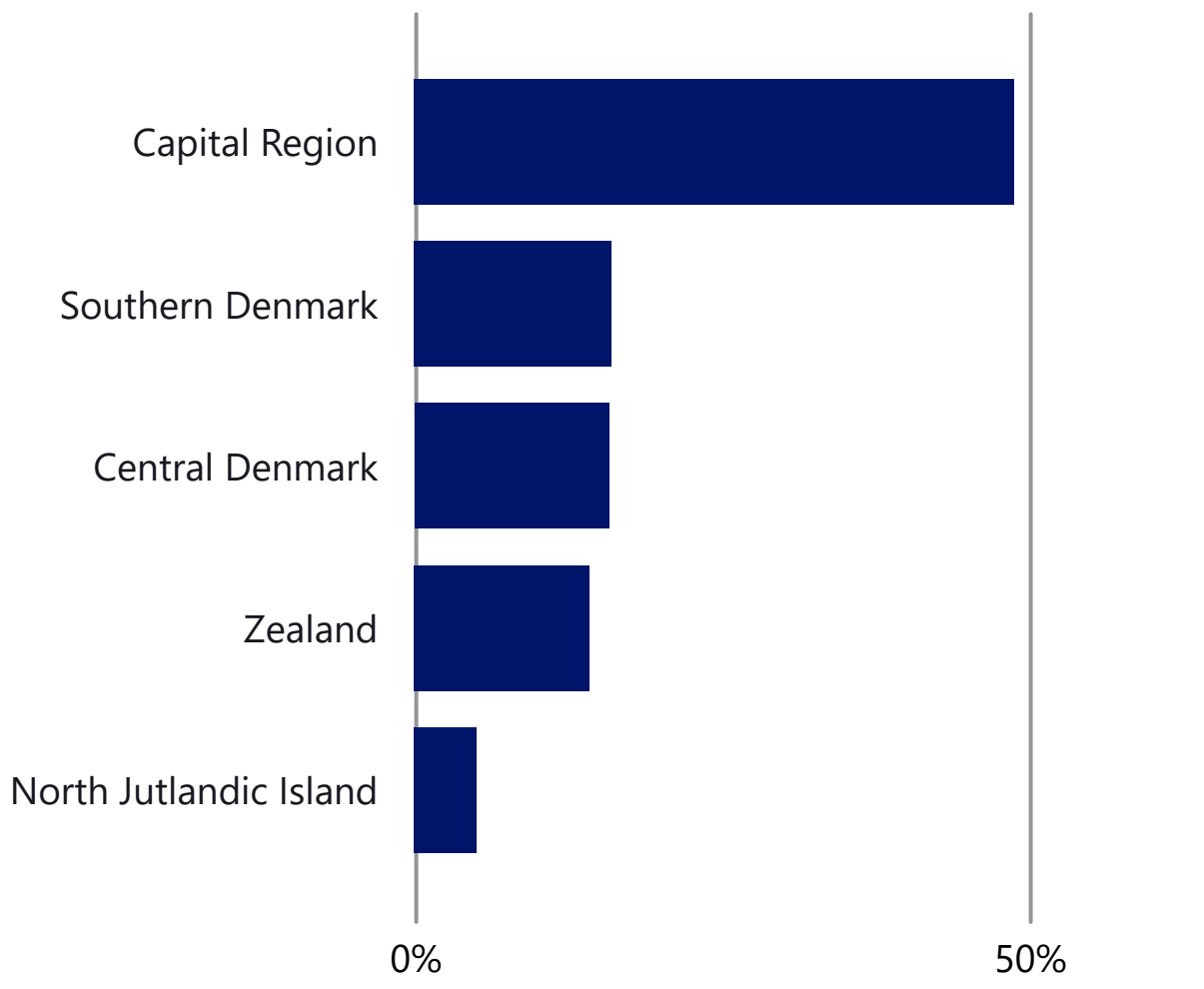
OC & Rating History



¹The credit rating(s) and outlook(s) provided in this document may not be shared with any unauthorised third party. Data shown is current as of 31 March 2024. This performance report has been created on 15 July 2024 but might have been made available on scoperatings.com on a later date.

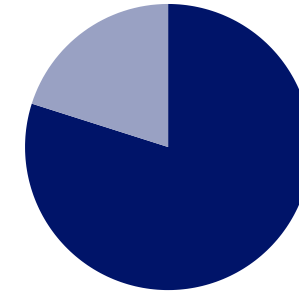
Mortgage Cover Pool Credit Risks as of 31 March 2024

Geographical Distribution



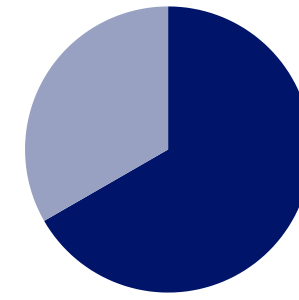
Collateral Type Distribution

Residential Commercial



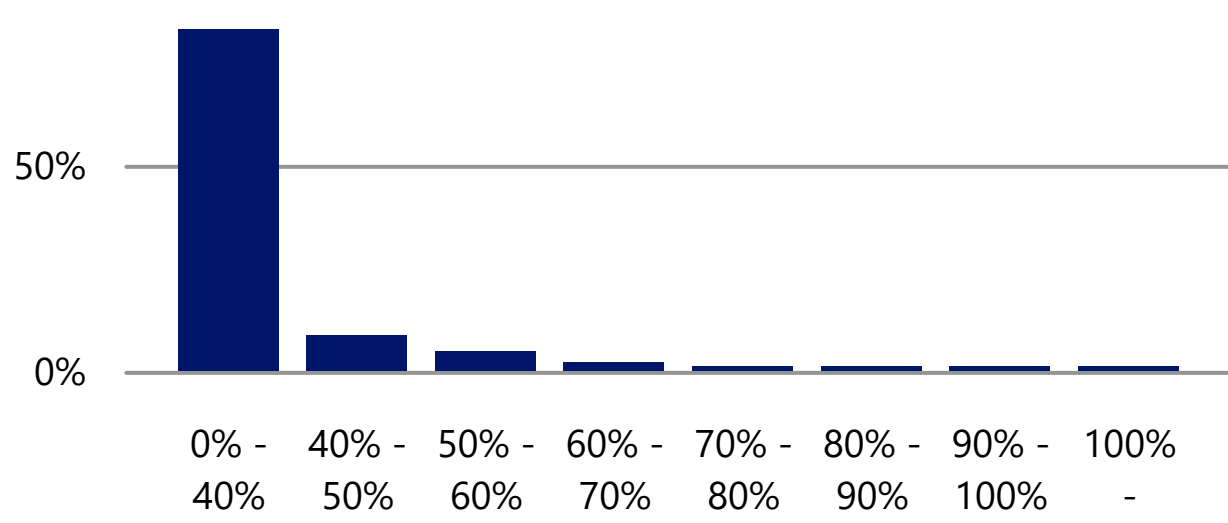
Repayment Type Distribution

Amortising Bullet



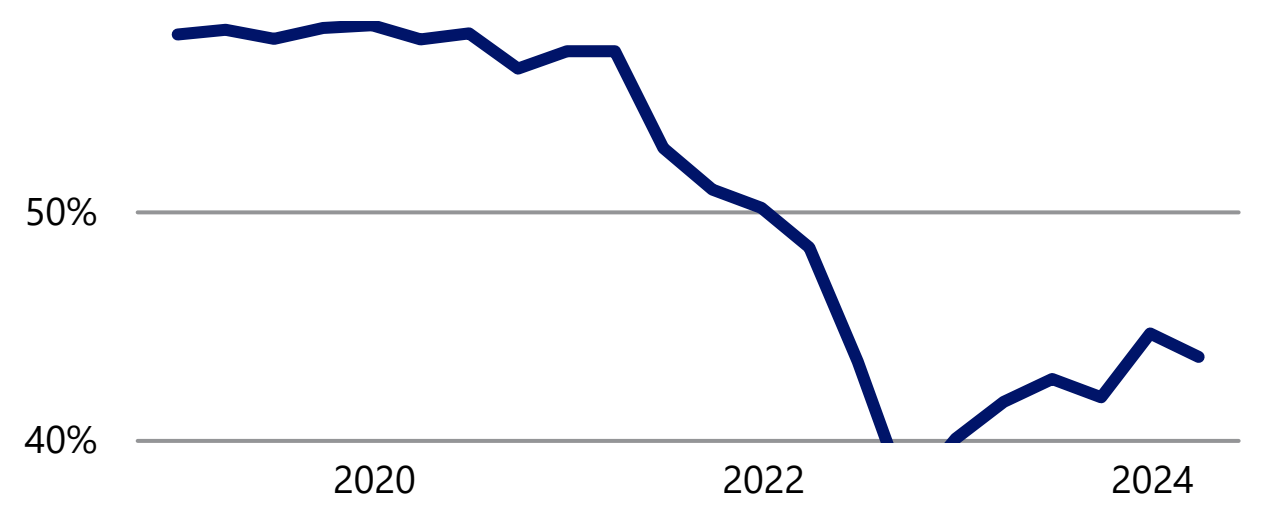
Loan to Value Distribution

Loan to Value - Indexed

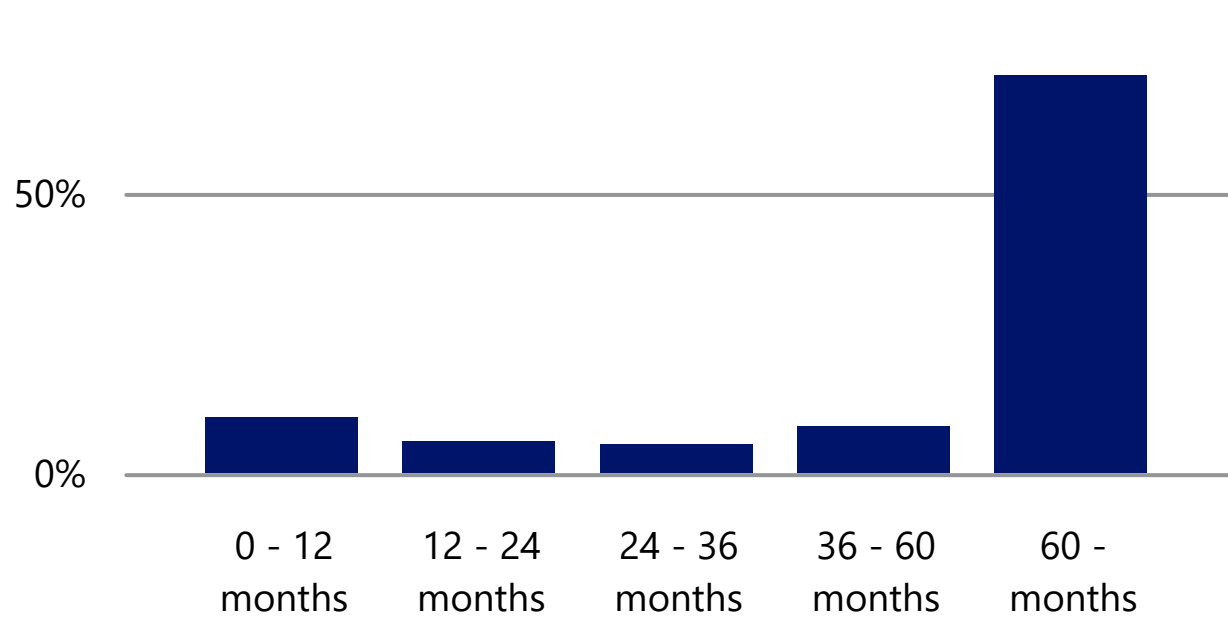


Weighted Average Loan to Value

Indexed WA LTV

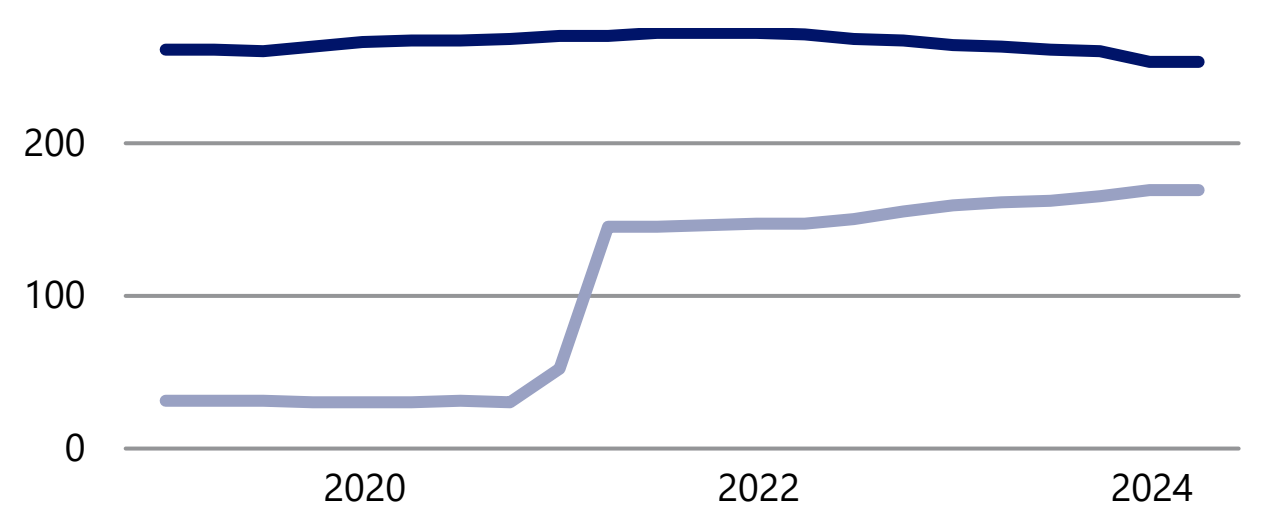


Seasoning Distribution



Weighted Average Seasoning & RTM (in months)

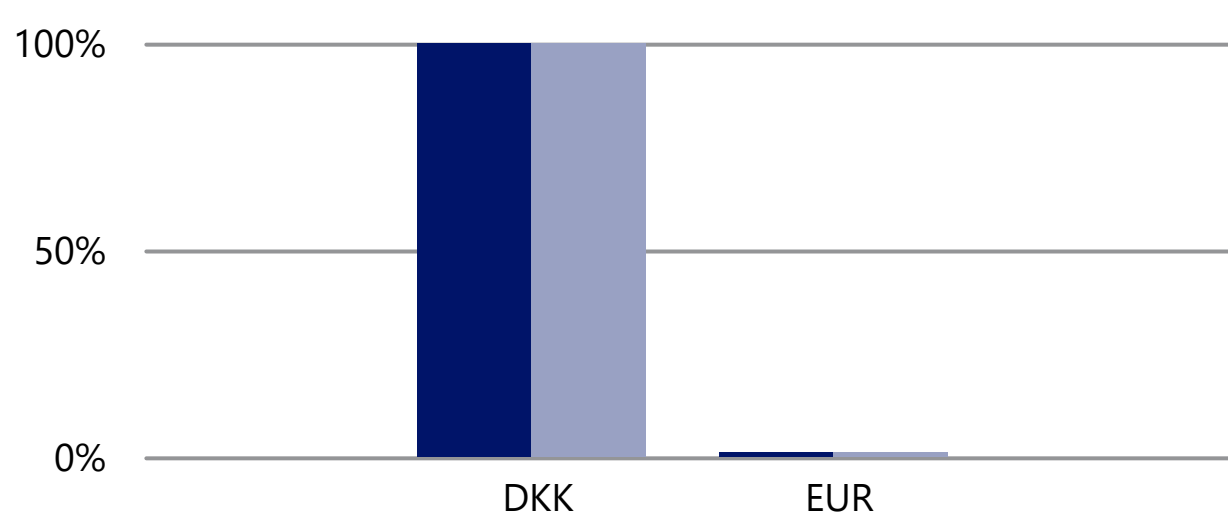
WA RTM WA Seasoning



Cover Pool Market Risks as of 31 March 2024

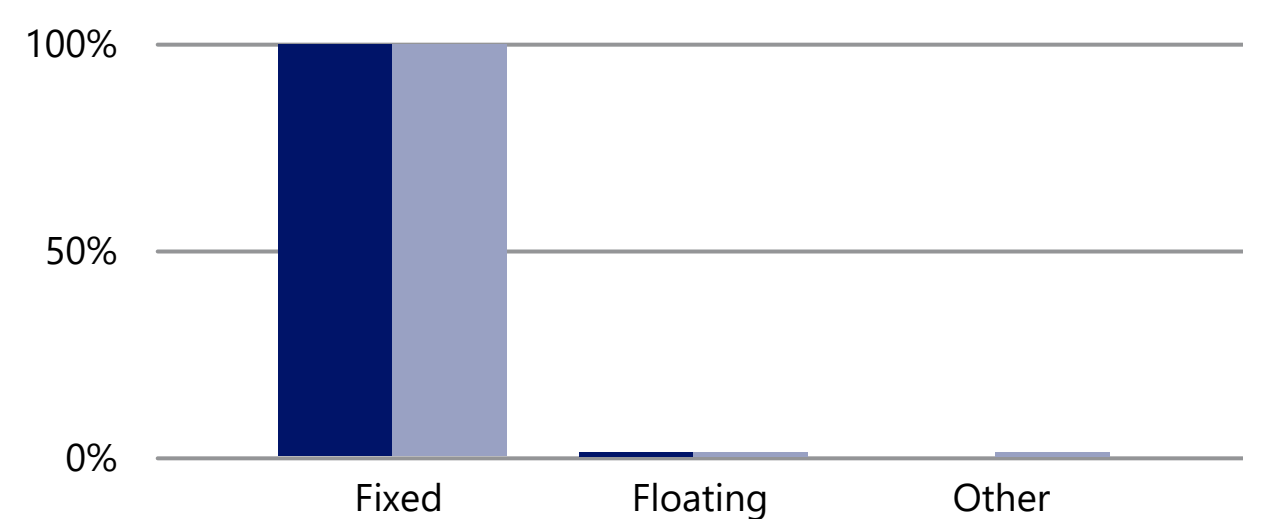
Currency Distribution

Covered Bonds Covered Pool



Interest Rate Type Distribution

Cover Pool Covered Bonds



Summary of covered bond characteristics(Mo)

Scope Metrics	2024Q1	2023Q1		
CB Rating	AAA / Stable	AAA / Stable		
Issuer Rating	A+ / Stable	A+ / Stable		
Supporting OC	2.0%	2.0%		
Legal Framework Uplift	2	2		
Resolution Regime Uplift	4	4		
CPC Category	Low	Low		
Cover Pool Uplift (Max)	9	9		
Cover Pool Uplift (Unused)	5	5		
General Information - Programme				
Cover Pool Size	288,536,000,000	294,381,000,000		
Outstanding Covered Bonds	268,744,000,000	276,213,000,000		
Legal OC	2.0%	2.0%		
Current OC	7.4%	6.6%		
Cover Pool Composition				
Mortgages	93.1%	93.8%		
Public Sector	0.0%	0.0%		
Substitute Assets	6.9%	6.2%		
General information - Mortgage				
Number of Loans/Borrowers	153,988	158,530		
Average Loan/Borrower Amount ('000)	1,745.23	1,742.34		
Top 10	1.0%	1.0%		
NPL	0.1%	0.0%		
Unindexed WA LTV	NR	NR		
Indexed WA LTV	43.6%	41.6%		
Maturity Profile				
Cover Pool WAL (contractual; in years)	24.00	24.00		
Covered Bonds WAL (initial; in years)	26.00	26.00		
Covered Bonds WAL (extended; in years)	NR	NR		
Cover Pool - Interest Rate Types				
Fixed	99.6%	99.5%		
Floating	0.4%	0.5%		
Other	0.0%	0.0%		
Covered Bonds - Interest Rate Types				
Fixed	99.6%	99.5%		
Floating	0.3%	0.3%		
Other	0.1%	0.1%		
Cover Pool - Currencies				
	DKK	100.0%	DKK	100.0%
	EUR	0.0%	EUR	0.0%
Covered Bonds - Currencies				
	DKK	100.0%	DKK	100.0%
	EUR	0.0%	EUR	0.0%
Regions (Top 3)				
	Capital Region	48.8%	Capital Region	48.1%
	Southern Denmark	16.0%	Central Denmark	16.4%
	Central Denmark	15.9%	Southern Denmark	16.2%

Latest related covered bond research (see [here](#))

Latest related financial institution research (see [here](#))

Current methodologies (see [here](#))

Scope Ratings GmbH

Lennéstraße 5
D-10785 Berlin
scoperatings.com

Phone +49 30 27891 - 0
Fax +49 30 27891 - 100
info@scoperatings.com



Bloomberg: RESO SCOP

Disclaimer

© 2024 Scope SE & Co. KGaA and all its subsidiaries including Scope Ratings GmbH, Scope Ratings UK Limited, Scope Fund Analysis GmbH, and Scope ESG Analysis GmbH (collectively, Scope). All rights reserved. The information and data supporting Scope's ratings, rating reports, rating opinions and related research and credit opinions originate from sources Scope considers to be reliable and accurate. Scope does not, however, independently verify the reliability and accuracy of the information and data. Scope's ratings, rating reports, rating opinions, or related research and credit opinions are provided 'as is' without any representation or warranty of any kind. In no circumstance shall Scope or its directors, officers, employees and other representatives be liable to any party for any direct, indirect, incidental or other damages, expenses of any kind, or losses arising from any use of Scope's ratings, rating reports, rating opinions, related research or credit opinions. Ratings and other related credit opinions issued by Scope are, and have to be viewed by any party as, opinions on relative credit risk and not a statement of fact or recommendation to purchase, hold or sell securities. Past performance does not necessarily predict future results. Any report issued by Scope is not a prospectus or similar document related to a debt security or issuing entity. Scope issues credit ratings and related research and opinions with the understanding and expectation that parties using them will assess independently the suitability of each security for investment or transaction purposes. Scope's credit ratings address relative credit risk, they do not address other risks such as market, liquidity, legal, or volatility. The information and data included herein is protected by copyright and other laws. To reproduce, transmit, transfer, disseminate, translate, resell, or store for subsequent use for any such purpose the information and data contained herein, contact Scope Ratings GmbH at Lennéstraße 5 D-10785 Berlin.